



PARKS

CONNECTING PEOPLE WITH NATURE

R.J. CARDIN, DIRECTOR
MARICOPA COUNTY PARKS AND RECREATION DEPT.



Maricopa County
Parks and Recreation Department
www.maricopacountyparks.net

BUCKEYE HILLS REGIONAL PARK



Maricopa County
Parks and Recreation Department
www.maricopacountyarks.net



PARK AGREEMENTS:

- Department enters into Special Use Permit to allow Arizona State Rifle and Pistol Association to manage and coordinate the exclusive use of the General Joe Foss Shooting Complex

CAVE CREEK REGIONAL PARK



Maricopa County
Parks and Recreation Department
www.maricopacountyarks.net



PARK PROJECTS:

- 11 RV sites added to the park
- Pollinator garden
- Eagle Scouts refurbish the park's monument sign



CAVE CREEK REGIONAL PARK



Maricopa County
Parks and Recreation Department
www.maricopacountyparks.net



LARGE SCALE EVENTS:

- 4th Annual Elephant Mountain Run;
- Cave Creek Thriller and Thrasher Run;
- Annual Stargazing Program;
- Rattlesnake Festival; and more

Check out Ranger Mark's wildlife selfies at
<https://www.facebook.com/CaveCreekPark/>

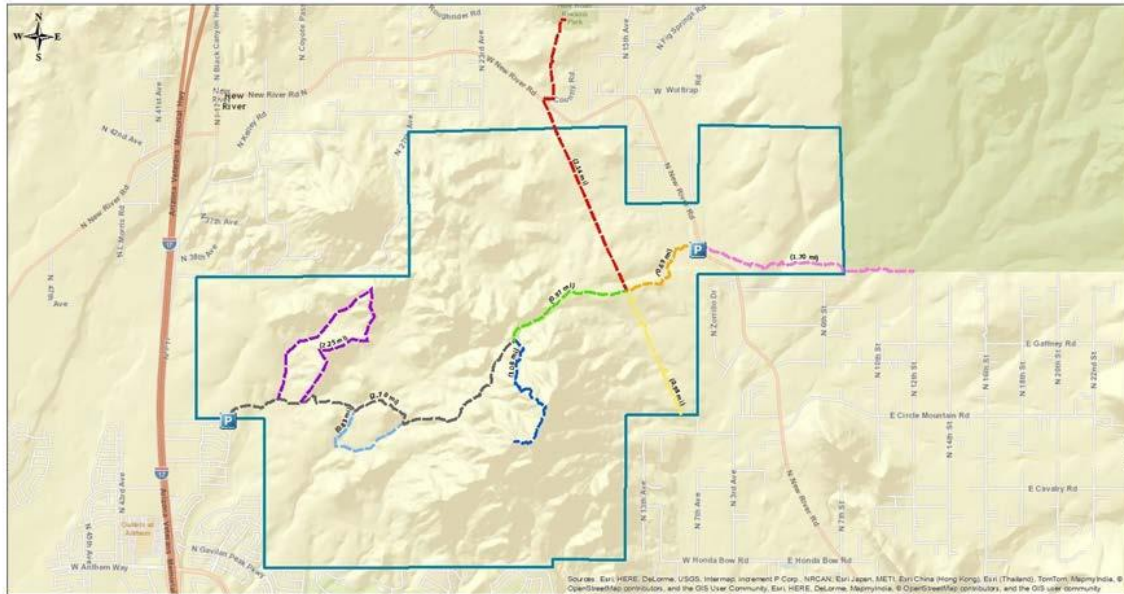


DAISY MOUNTAIN TRAIL SYSTEM



Maricopa County
Parks and Recreation Department
www.maricopacountyparks.net

Daisy Mountain Focus Area Trails



- Trailhead
- Kiwanis Trail
- North Trail Loop
- Powerline to Saddle Trail
- Skunk Creek Trail
- West Entry Trail
- New River Road to Powerline
- Powerline to Maricopa Trail
- Saddle to Top Trail
- South Trail Loop

- 7/20/16 – Application Submitted to AZ State Land Dept. for Right of Way on State Trust Lands
- Approximately 11.5 miles / 14 acres
- Parks received limited funding from District 3 for the purpose of acquiring trail easements in the Daisy Mountains

DESERT OUTDOOR CENTER AT LAKE PLEASANT



Maricopa County
Parks and Recreation Department
www.maricopacountyparks.net



LARGE SCALE PROGRAMS:

- Annual Boy Scout Camp

PARK PROJECTS:

- One of the Interpretive Rangers painted four murals to brighten up the dormitories. The theme was blooming desert plants

ESTRELLA MOUNTAIN REGIONAL PARK



Maricopa County
Parks and Recreation Department
www.maricopacountyparks.net



PARK PROJECTS:

- Turf/Picnic area renovations
 - new loop sidewalk;
 - shade structures;
- picnic tables;
- concrete walkway;
- 150 new trees; and
- restroom modifications



HASSAYAMPA RIVER PRESERVE



Maricopa County
Parks and Recreation Department
www.maricopacountyarks.net



PARK PROJECTS:

- Agreement with The Nature Conservancy to manage the Preserve signed – April 2017
 - FACILITY IMPROVEMENTS: Visitor Center back porch reconstructed; new front desk and flooring in Visitor Center; display shelving for the retail center; structural repairs; electrical system upgrades; roofing, new air-conditioner; painting; and New accessible restroom building
 - TRAILS: Signage replaced and improvements made to trails
 - GROUNDS: Picnic area, parking lot, road improvements and new decorative fencing

LAKE PLEASANT REGIONAL PARK



Maricopa County
Parks and Recreation Department
www.maricopacountyparks.net



- National Association of County Park and Recreation Officials Award for the new Discovery Center
- **LARGE SCALE EVENTS:**
 - Discovery Center Grand Opening
 - Dam Good Run
 - Paddle Fest
 - CAST for Kids Clinic
 - Prickly Pedal Mountain Bike Race

LAKE PLEASANT REGIONAL PARK



Maricopa County
Parks and Recreation Department
www.maricopacountyparks.net



PARK PROJECTS:

- Discovery Center lower deck area installed
- Three new docks installed in July 2018
- New waste water systems and upgrades
- Installation of air quality public monitoring devices/kiosk at the Discovery Center
- Pipeline Canyon floating bridge repaired by trades and trails crews
- Agua Fria construction – park host sites
- Scorpion Bay Marina improves restaurant, dock slips, and adds on-water cabin



LAKE PLEASANT REGIONAL PARK



Maricopa County
Parks and Recreation Department
www.maricopacountyparks.net



PARK PROJECTS:

- A variety of renovations and major maintenance:
 - Cottonwood Day-Use Area
 - Pipeline Canyon Day-Use Area
 - Wild Burro Day-Use Area
 - Bobcat Day-Use Area
 - Ramada renovations
 - Access gates to campgrounds
 - Ringtail Day-Use Area
 - 10 Lane East and West restrooms
 - Roadrunner Campground campsites
 - Water valve replacements





Maricopa County
Parks and Recreation Department
www.maricopacountyarks.net

MARICOPA TRAIL



PARK PROJECTS:

- Newest segment: Segment 22 – McDowell Sonoran Preserve to the Bronco Trailhead – 16 miles

LARGE SCALE EVENTS:

- Prickly Pedal Mountain Bike Race:
2016: 280 riders
2017: 300+ riders
2018: 240 riders



MCDOWELL MOUNTAIN REGIONAL PARK



Maricopa County
Parks and Recreation Department
www.maricopacountyparks.net

 USA TODAY

NEWS SPORTS LIFE MONEY TECH TRAVEL OPINION 94° CROSSWORDS VIDEO GRATEFUL SUBSCRIBE NEWSLETTERS STOCKS MORE

10 great hidden-gem parks and campgrounds

Larry Bleiberg, Special to USA TODAY Published 8:16 a.m. ET March 9, 2018 | Updated 9:27 a.m. ET March 9, 2018



 Fullscreen

Hidden-gem parks and campgrounds

Located just outside Phoenix, McDowell Mountain Regional Park offers camping in a gorgeous Sonoran Desert setting. *Jessie Johnson and Matt Schneider*

McDowell Mountain Regional Park, Ariz.

Located just outside Phoenix, this park isn't hidden, but few people realize it offers camping in a gorgeous Sonoran Desert setting. "You can ride your bike on miles and miles of bike trails, surround by cacti galore," Johnson says. "It offers 360-degree views. You can watch the sunset out of one end of your tent, and in the morning you can unzip the other side and watch the sunrise." maricopacountyparks.net/mcdowell-mountain-regional-park-mm

MCDOWELL MOUNTAIN REGIONAL PARK



Maricopa County
Parks and Recreation Department
www.maricopacountyparks.net

MCDOWELL MOUNTAIN REGIONAL PARK

MCDOWELL MOUNTAIN REGIONAL PARK

Volume 1 - February 2018

Host Agency

Maricopa County
Parks and Recreation Dept.
41835 N. Castle Hot
Springs Road
Morristown, AZ 85342-9887
Phone: (928)501-9200
Web: www.maricopacountyparks.net

Vision: To connect people with nature through regional parks, trails and programs, inspire and appreciation for the Sonoran desert beauty and natural open spaces, and create life-long positive memories.

Mission: Through responsible stewardship, provide quality parks, trails, programs, services and experiences that energize visitors and create life-long users and advocates.

Master Plan Update

Located four miles north of the Town of Fountain Hills, McDowell Mountain Regional Park is comprised of 21,099 acres within the lower Verde Basin, and is the third largest park in Maricopa County's regional park system.

With over 60-miles of multi-use trails and 14-miles of competitive track, the park is recognized for its diversity of user experiences, and houses a number of large scale events. In addition, the park is adjacent to Scottsdale's McDowell Sonoran Preserve, which provides users the opportunity to traverse between two great open spaces.

While the Park's Master Plan, which was originally developed in 1967 took into account the needs of the park visitors back then, it is outdated and no longer meets the needs of today's park visitors. In late December 2017, the department began the arduous task of updating the Master Plan.

Today, the department is inviting the neighboring communities to provide feedback on the development of the Park's Master Plan Update. The Master Plan Update will outline the long-range vision for park facilities and infrastructure as well as development priorities that will provide for both the public's enjoyment and the protection of the park's resources. It will serve as a guide and policy document for current and future park staff, partnering agencies, elected officials, and interested members of the public.

PARK PROJECTS:

- Master Plan Update currently underway
- Southwest Wildlife Conservation Center potential partnership for a native wildlife rescue conservation/nature center in the park
- Four new tent camping sites added to Ironwood Picnic Area
 - Scout Troop 649 donated materials and labor to install a split-rail fence around the campground playground area

A New Home for Southwest Wildlife Conservation Center

Thank YOU

ABOUT Us

The NEED

TIMELINE

Linda Searles
Founder and Executive Director
Southwest Wildlife Conservation Center

PHOTOARK

MCDOWELL MOUNTAIN REGIONAL PARK



Maricopa County
Parks and Recreation Department
www.maricopacountyarks.net



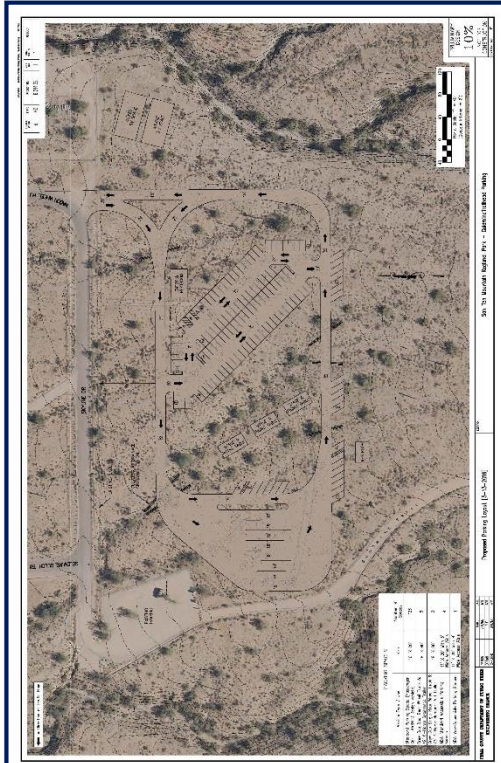
LARGE SCALE EVENTS:

- McDowell Mountain Frenzy
- Dawn to Dusk
- REI 5K/13K
- Xterra Trail Run
- Hike for the Homeless
- Mountain to Fountain
- Ragnar Del Sol
- Adrenaline Night Run
- AZ Interscholastic Cycling League
- Mountain Bike Race
- Javelina Jundred; and
- Much more!

SAN TAN MOUNTAIN REGIONAL PARK



Maricopa County
Parks and Recreation Department
www.maricopacountyparks.net



PARK PROJECTS:

- New well installed (FY16)
- Parking lot improvements at Goldmine Trailhead
- Eagle Scouts installed a replica Hohokam pit house to promote archaeological resources
- Boy Scout Troop and volunteers from Hands on Greater Phoenix planted new vegetation
- Sewer connection from host site to septic tank
- Tuff Shed installed at Nature Center

SPUR CROSS RANCH CONSERVATION AREA



Maricopa County
Parks and Recreation Department
www.maricopacountyparks.net

PARK PROJECTS:

- Invasive Fountain Grass clean-up
- Entry station added – Contains interpretive displays and a small retail center
- November 2017: The interpretive ranger and his trails' volunteers have been busy the last couple of months removing and pruning over grown vegetation, digging drains for erosion issues, and removing loose rock from the trails

LARGE SCALE EVENTS:

- Archeology Expo



USERY MOUNTAIN REGIONAL PARK



Maricopa County
Parks and Recreation Department
www.maricopacountyparks.net



PARK PROJECTS:

- New Desert Tortoise Habitat near amphitheater/nature center
- Two new bird blinds were installed at the viewing pond. The blinds will help birders and photographers capture wildlife through binoculars or a camera without spooking the critters.

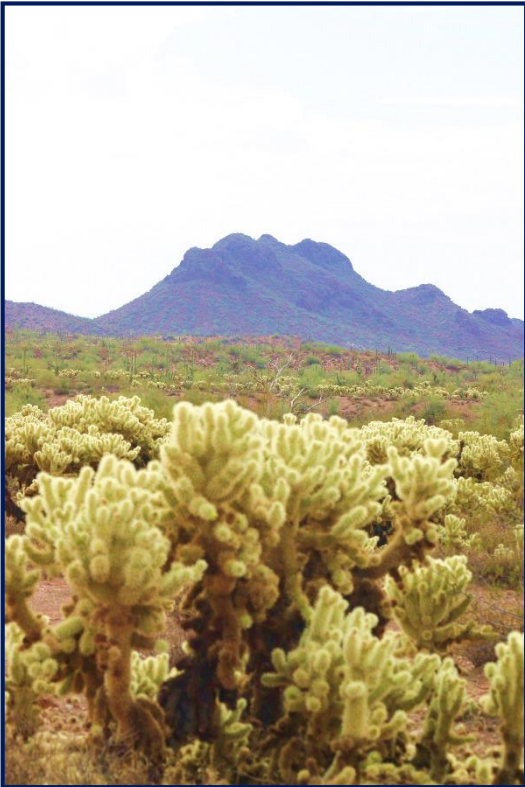
LARGE SCALE EVENTS:

- 310 archers from around the state competed in the Cactus Classic Archery Tournament in the park
- Scorpion Hunts average 123 participants per program, and the Showdown Bike Race, Pass Mountain Trail Run, and Goofy Ghost Walk

VULTURE MOUNTAINS RECREATION AREA



Maricopa County
Parks and Recreation Department
www.maricopacountyparks.net



PARK PROJECTS:

- Working with MCDOT on the future road alignment for proposed facilities in the recreation area
- Environmental Assessment with the Bureau of Land Management

WHITE TANK MOUNTAIN REGIONAL PARK



Maricopa County
Parks and Recreation Department
www.maricopacountyparks.net

PARK PROJECTS:

- Installation of a concrete hiking path.
- 15 ramadas renovated
- Willow Campground improvements

LARGE SCALE EVENTS:

- AZ High School Mountain Bike Race; Friends of White Tank; Cactus Flower 7K; Vertigo Night Run; Stargazing; Sonoran Spook-tacular Howl-o-ween Fest

